

An aerial photograph of Arrowhead Elementary School and its surrounding area. The school building is a large, multi-winged structure with a brown roof, situated in the center. To the left of the school is a large green field with a baseball diamond. To the right is a large, paved parking lot. The school is surrounded by dense green trees and a road runs along the left side. In the background, there are residential houses and swimming pools.

ARROWHEAD FORWARD

New Elementary School at Arrowhead

April 21st, 2020 Board

Update

PROPOSED ARROWHEAD

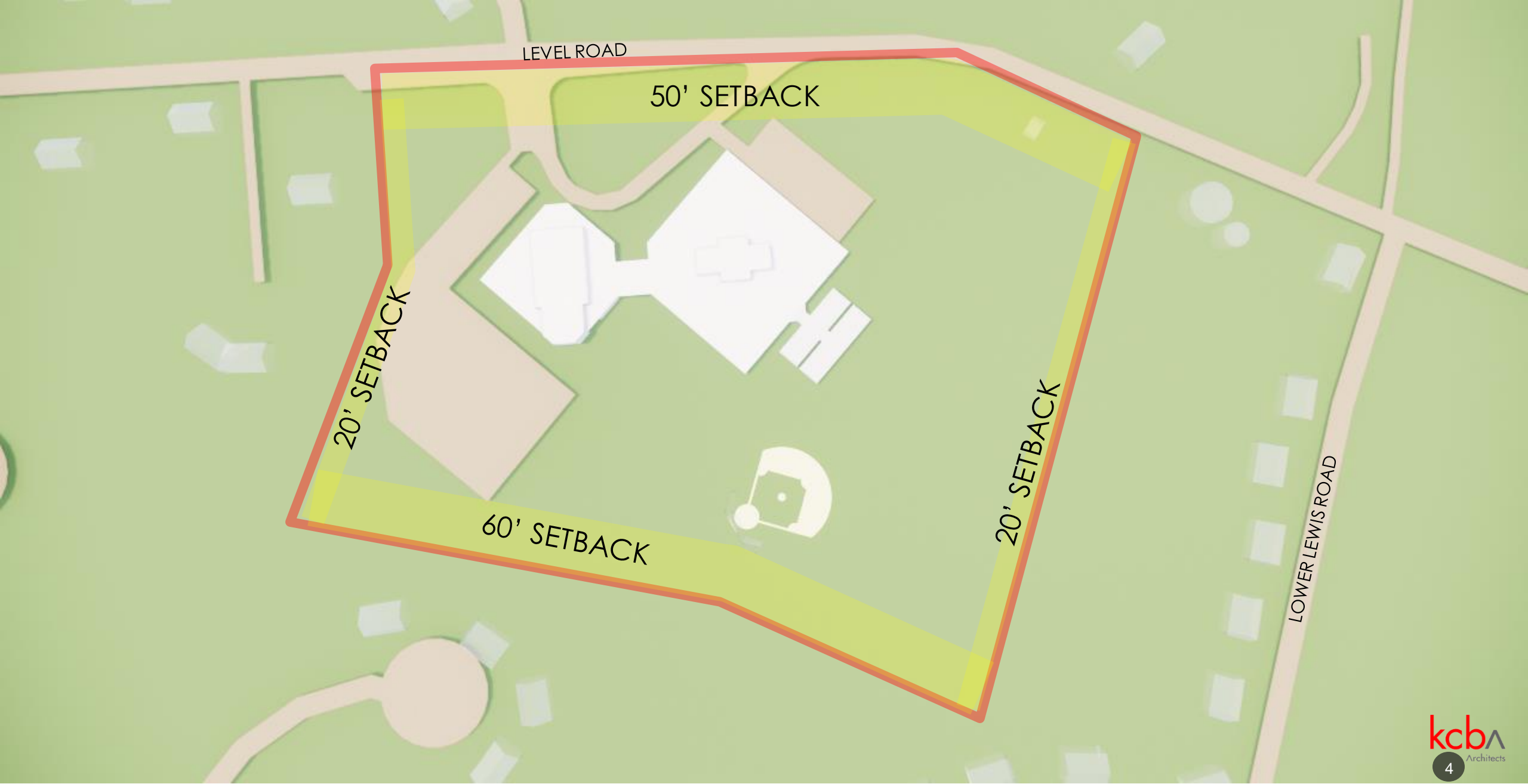
TONIGHT'S AGENDA

1. Land Development Recap
2. Review of site improvements
3. Review of building improvements
4. Project Schedule
 - Land Development Schedule
 - Act 34 Hearing Schedule
 - Construction Schedule
5. Budget update
6. Next steps

LAND DEVELOPMENT RECAP

- 1. Kick-off Township Meeting (December 20, 2019)**
- 2. Met with Fire Marshal (March 3, 2020)**
- 3. Prelim/Final Plan Submission Submitted (March 13, 2020)**
- 4. NPDES Submitted (March 30, 2020)**
- 5. Planning Commission Meeting (April 22, 2020)**
- 6. Prelim/Final Plan Submission #2 (May 15, 2020)**
- 7. Planning Commission Meeting (July 22, 2020)**
- 8. Anticipated NPDES Approval (September 2020)**

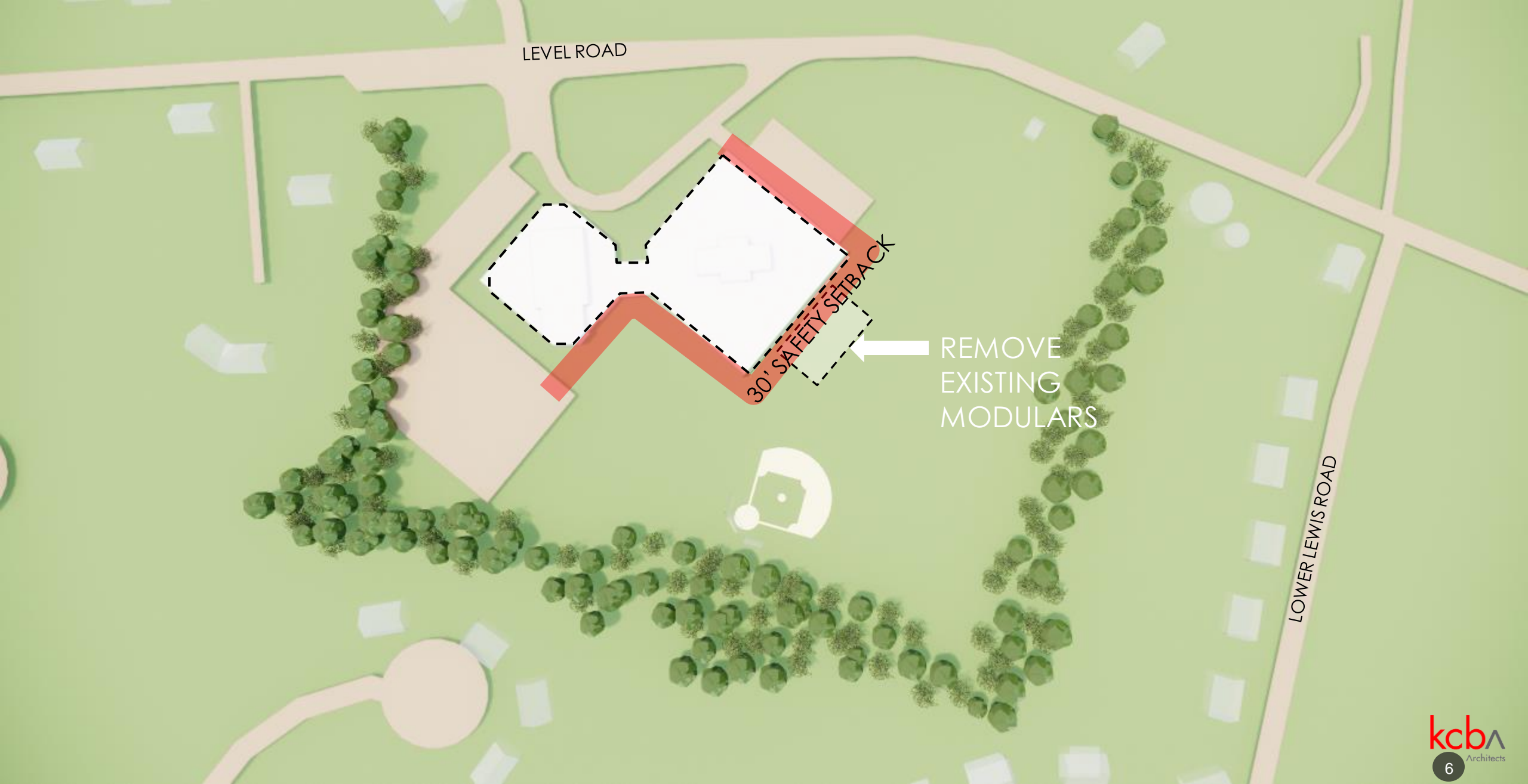
EXISTING SITE & SETBACKS



EXISTING SITE & SETBACKS



EXISTING SITE & SETBACKS



PROPOSED SITE PLAN





PROPOSED ARROWHEAD ELEMENTARY

K-4 ELEMENTARY

5 CLASSROOMS PER GRADE

TOTAL CAPACITY: 625

FIRST FLOOR: 57,987 SF

SECOND FLOOR: 27,309 SF

TOTAL: 85,296 SF

ACADEMIC:

15 CLASSROOMS, 900 SF, NO TOILETS

10 CLASSROOMS, 835 SF, SINGLE-USE TOILET IN CLASSROOM

8 SPECIAL EDUCATION, 660-900 SF

COLLABORATION:

LIBRARY, 2000 SF + STEM 1200 SF

5 SMALL GROUP INSTRUCTION ROOMS, 350 SF

2 INNOVATION SPACES, 850 SF

COMMUNITY:

CAFETERIA, 2400 SF

GYM, 5800 SF

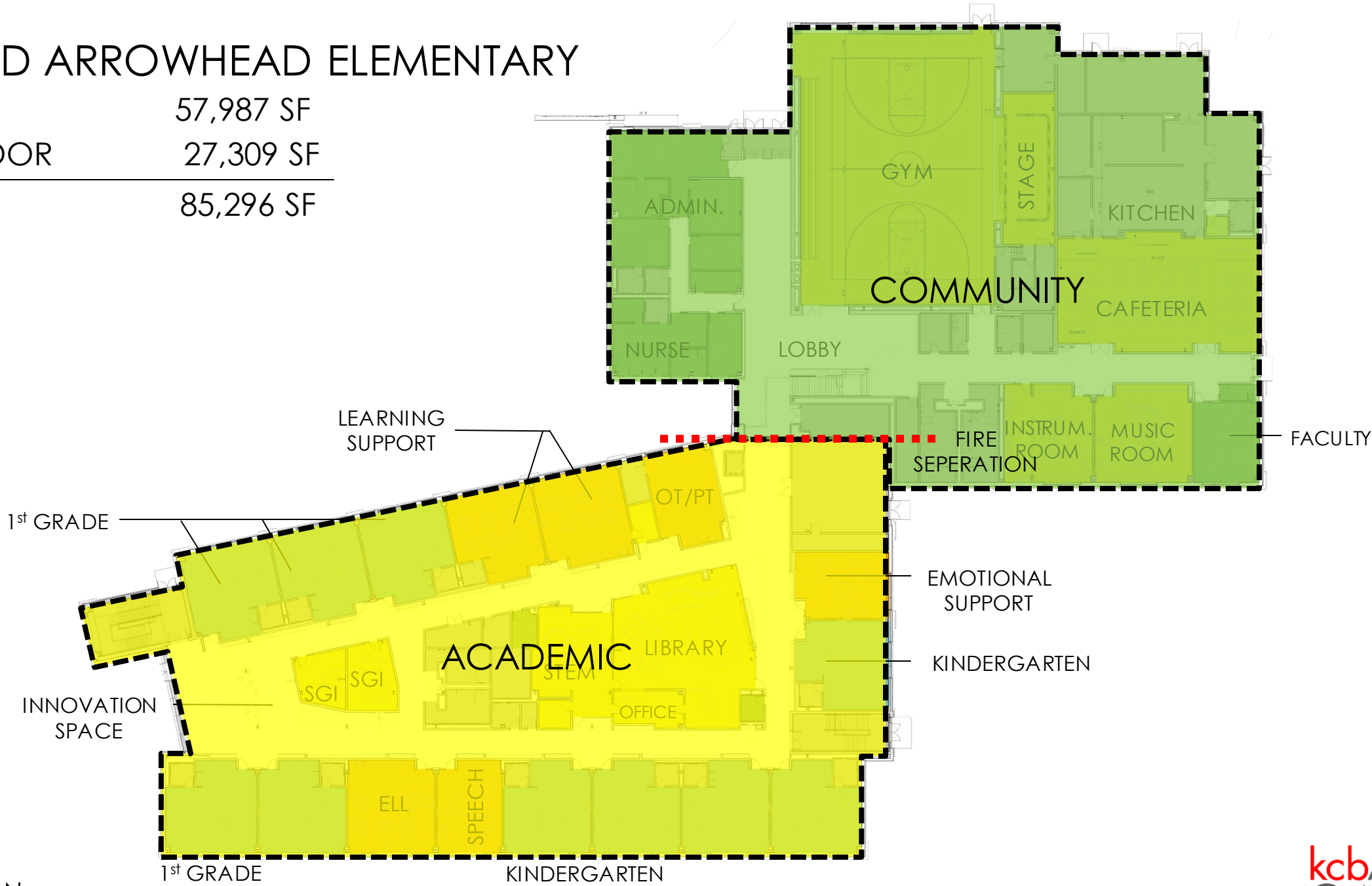
STAGE, 950 SF



ARROWHEAD ELEMENTARY

PROPOSED ARROWHEAD ELEMENTARY

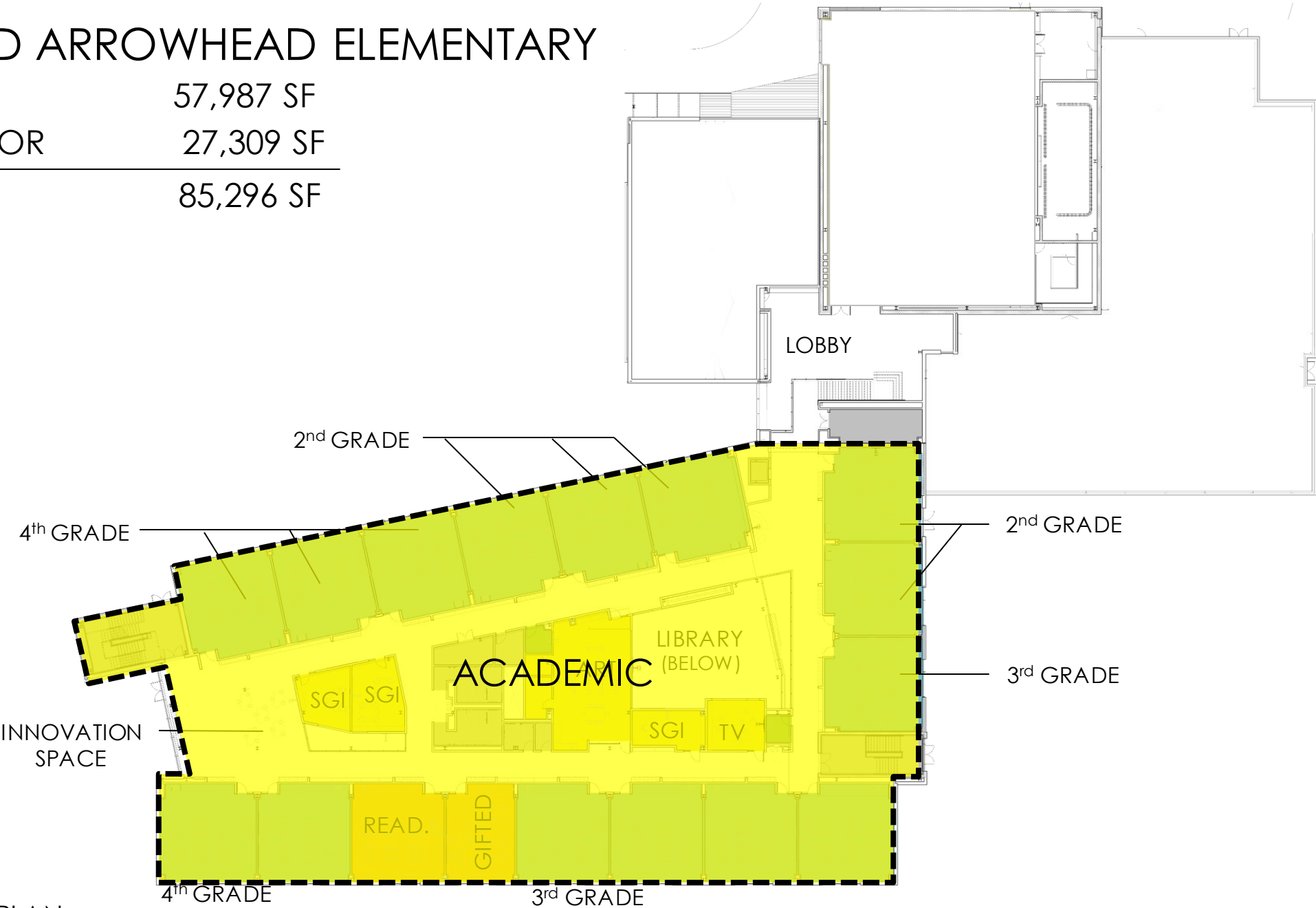
FIRST FLOOR	57,987 SF
SECOND FLOOR	27,309 SF
<hr/>	
TOTAL	85,296 SF



FIRST FLOOR PLAN

PROPOSED ARROWHEAD ELEMENTARY

FIRST FLOOR	57,987 SF
SECOND FLOOR	27,309 SF
<hr/>	
TOTAL	85,296 SF



SECOND FLOOR PLAN



PARKING & PLAY

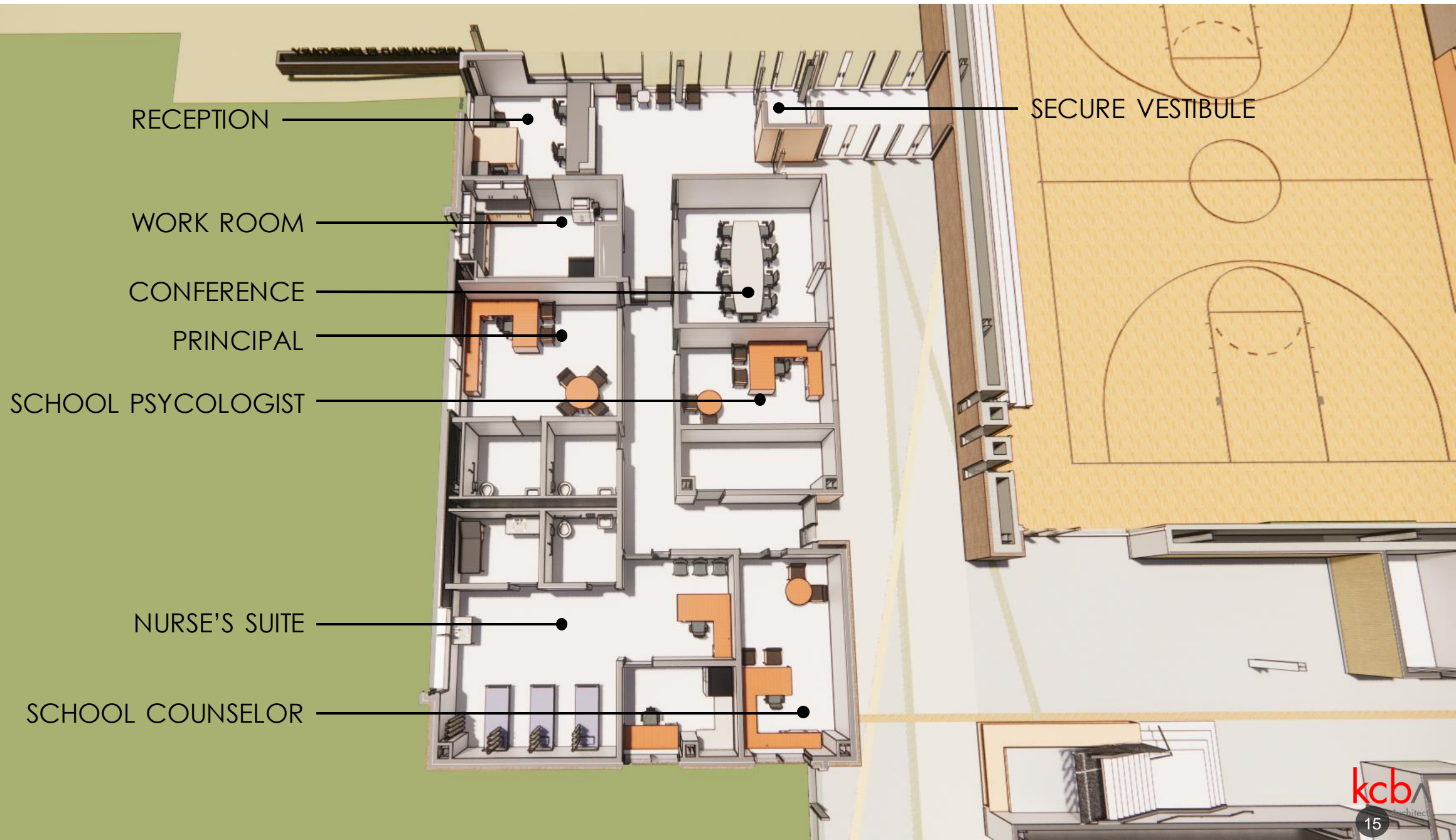


FRONT ENTRY



FRONT ANIMATION

ADMINISTRATION + LOBBY





RECEPTION

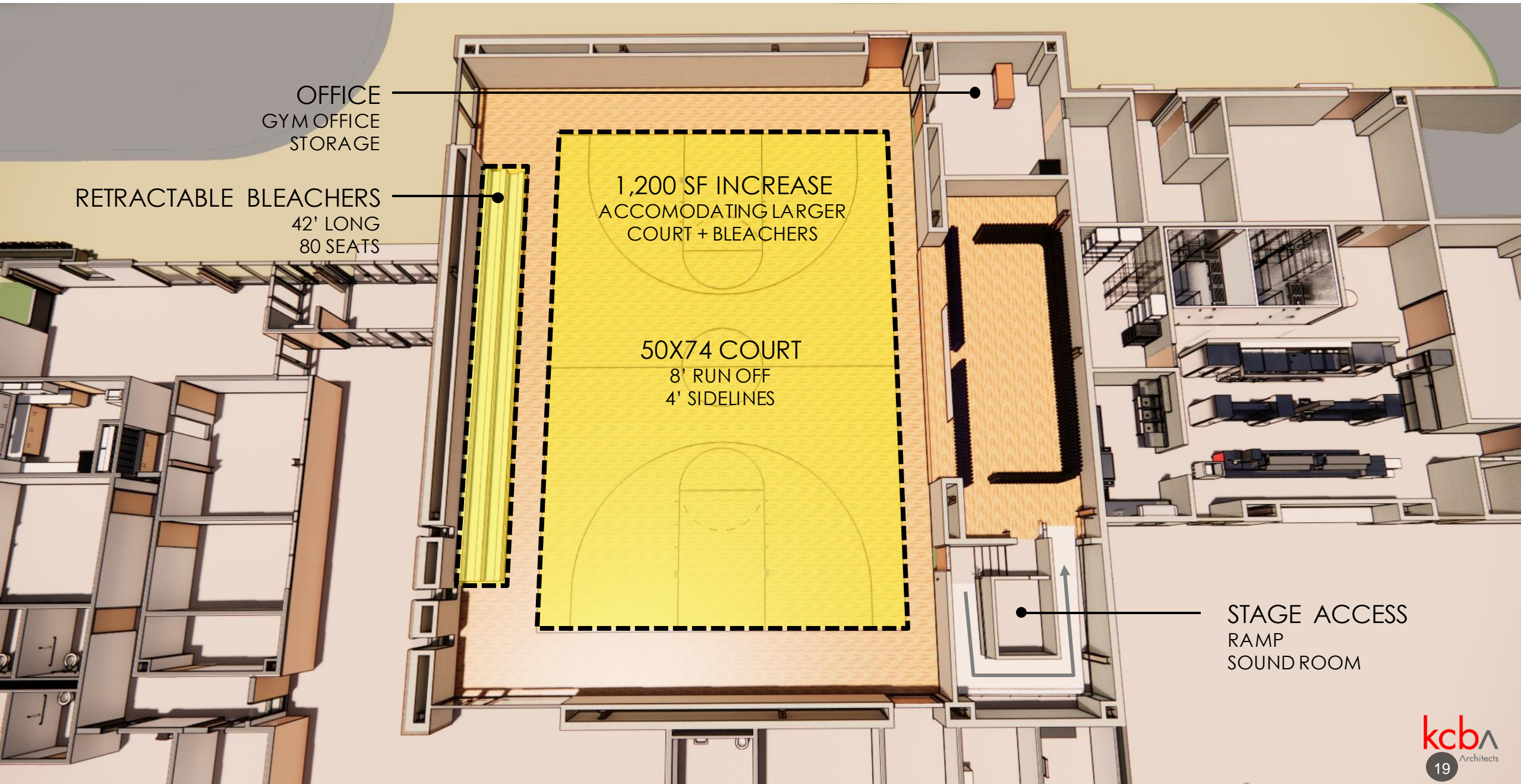


RECEPTION ANIMATION



MAIN LOBBY

GYMNASIUM



OFFICE
GYM OFFICE
STORAGE

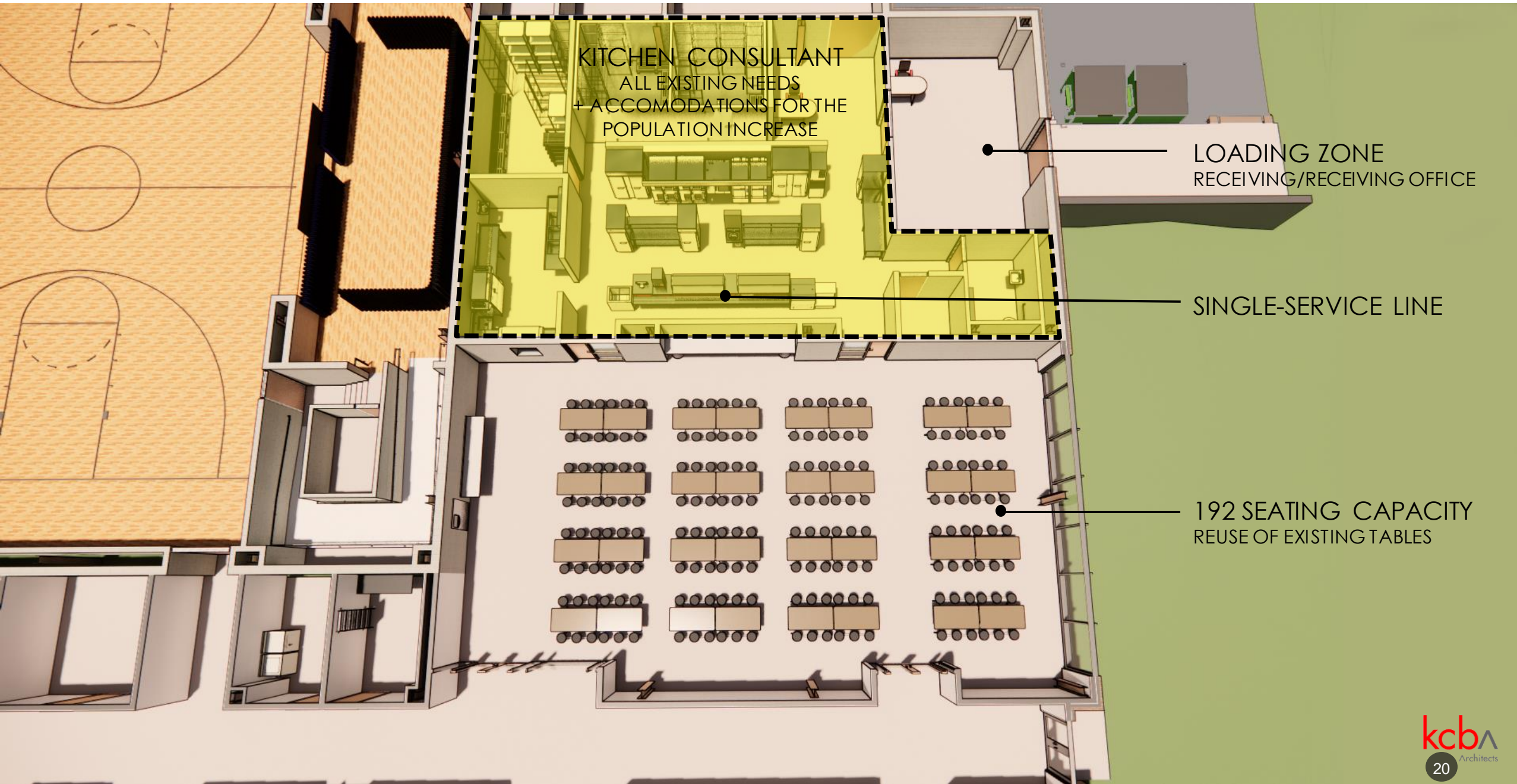
RETRACTABLE BLEACHERS
42' LONG
80 SEATS

1,200 SF INCREASE
ACCOMODATING LARGER
COURT + BLEACHERS

50X74 COURT
8' RUN OFF
4' SIDELINES

STAGE ACCESS
RAMP
SOUND ROOM

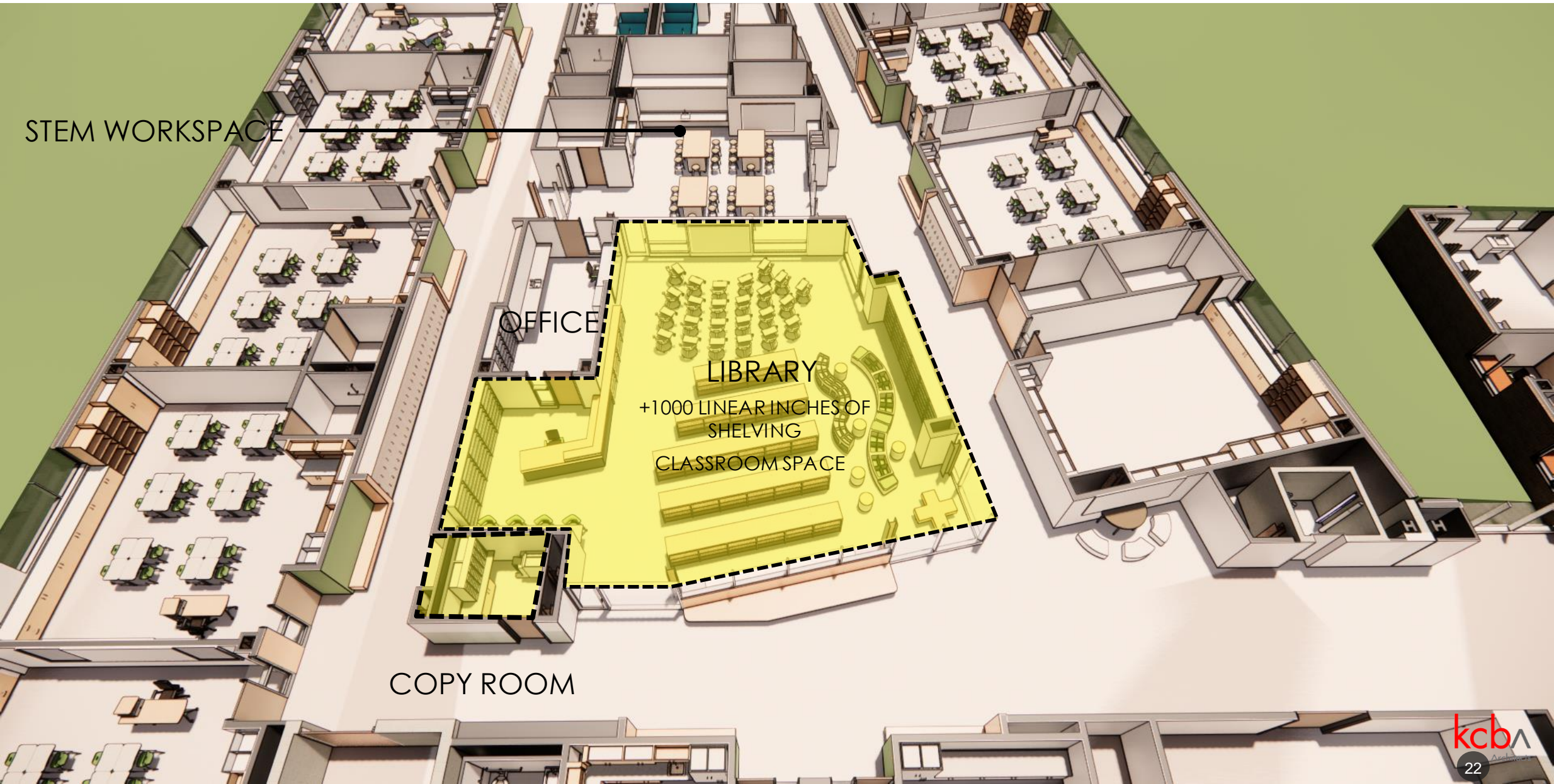
CAFETERIA





LOBBY ANIMATION

LIBRARY + STEM





LIBRARY ENTRY



LIBRARY



LIBRARY



LIBRARY

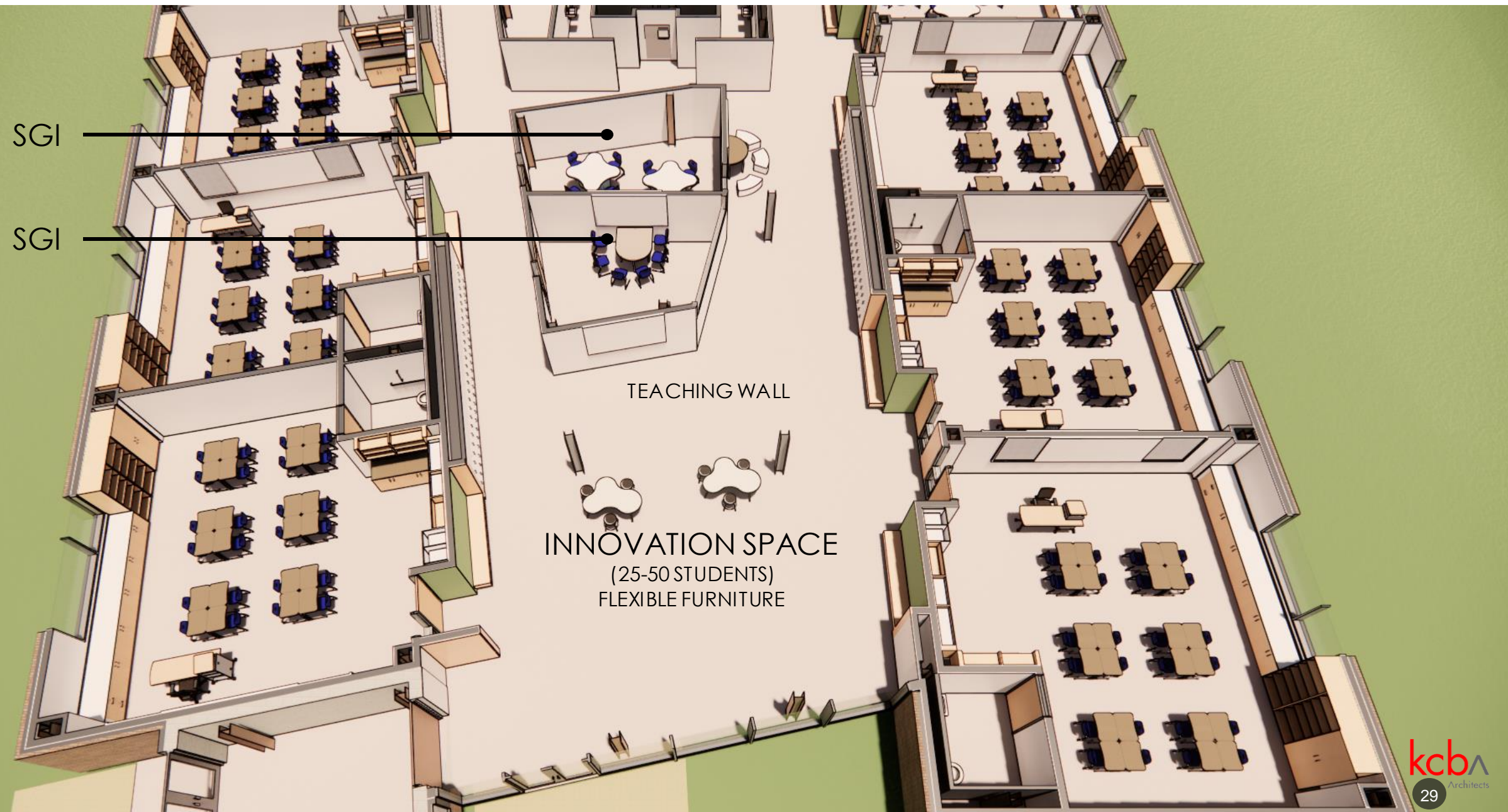


STEM CLASSROOM

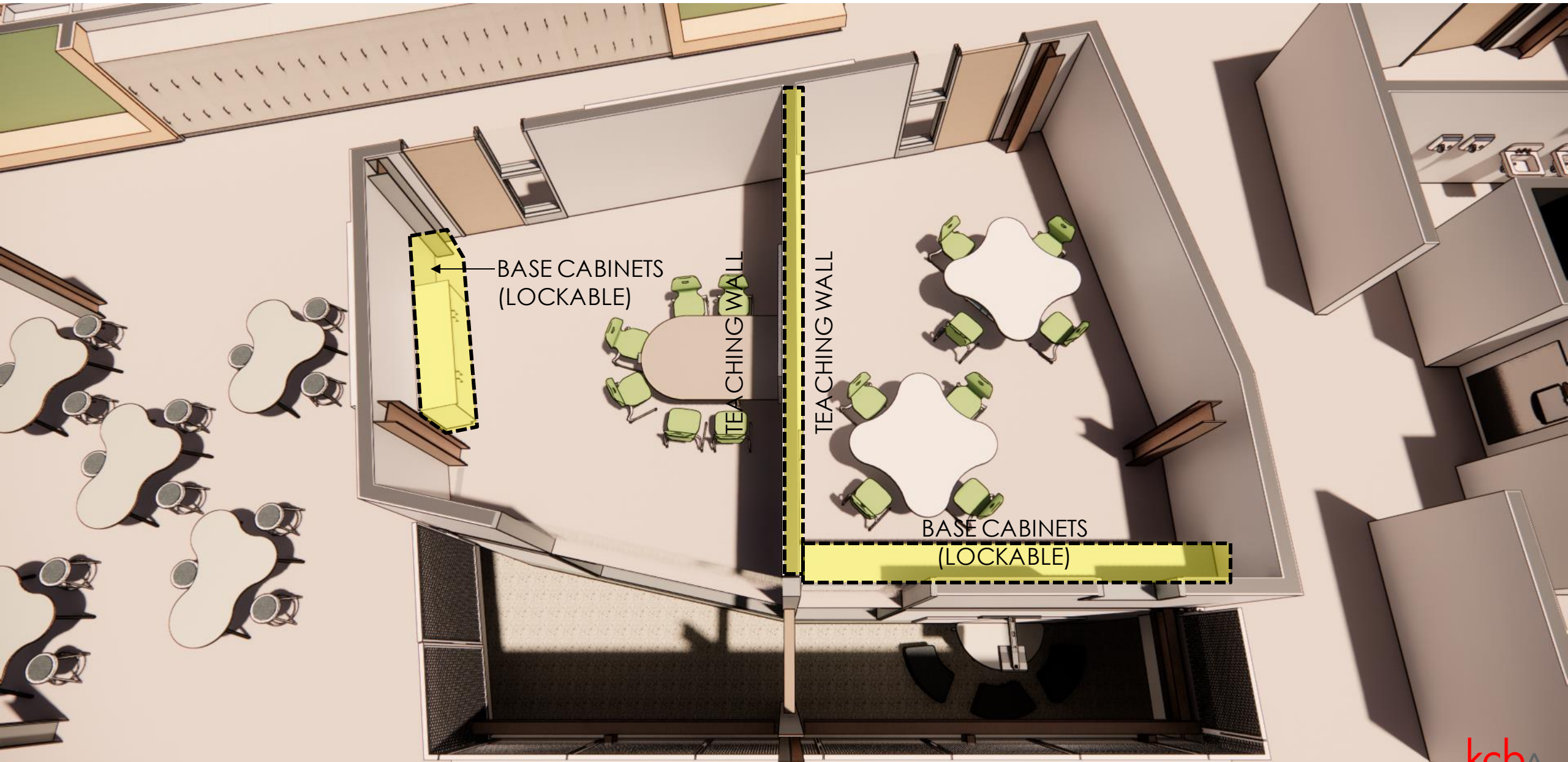


STEM ANIMATION

SMALL GROUP INSTRUCTION + INNOVATION SPACE



SMALL GROUP INSTRUCTION

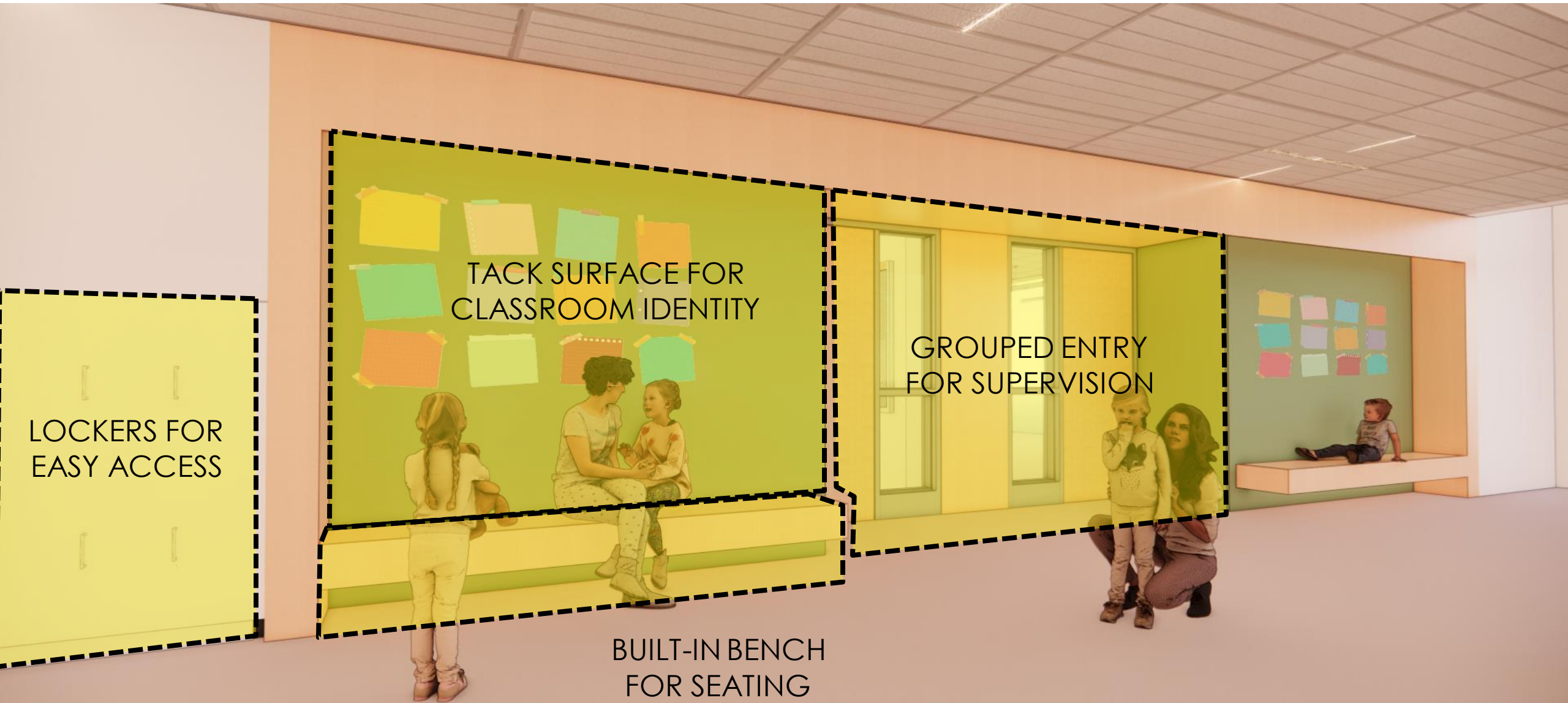




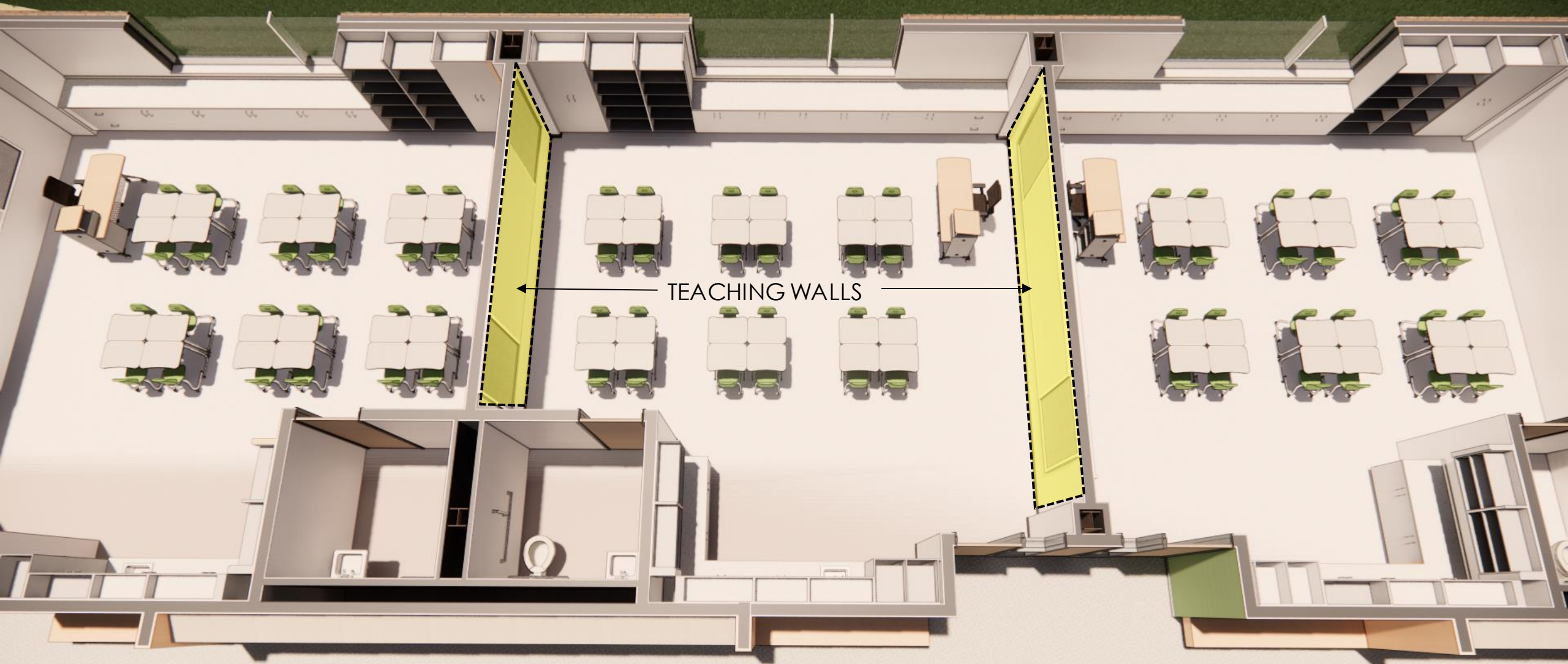
INNOVATION COMMONS



CLASSROOM ENTRY

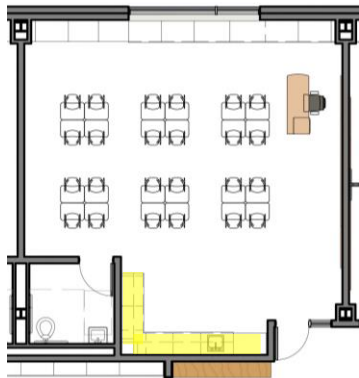
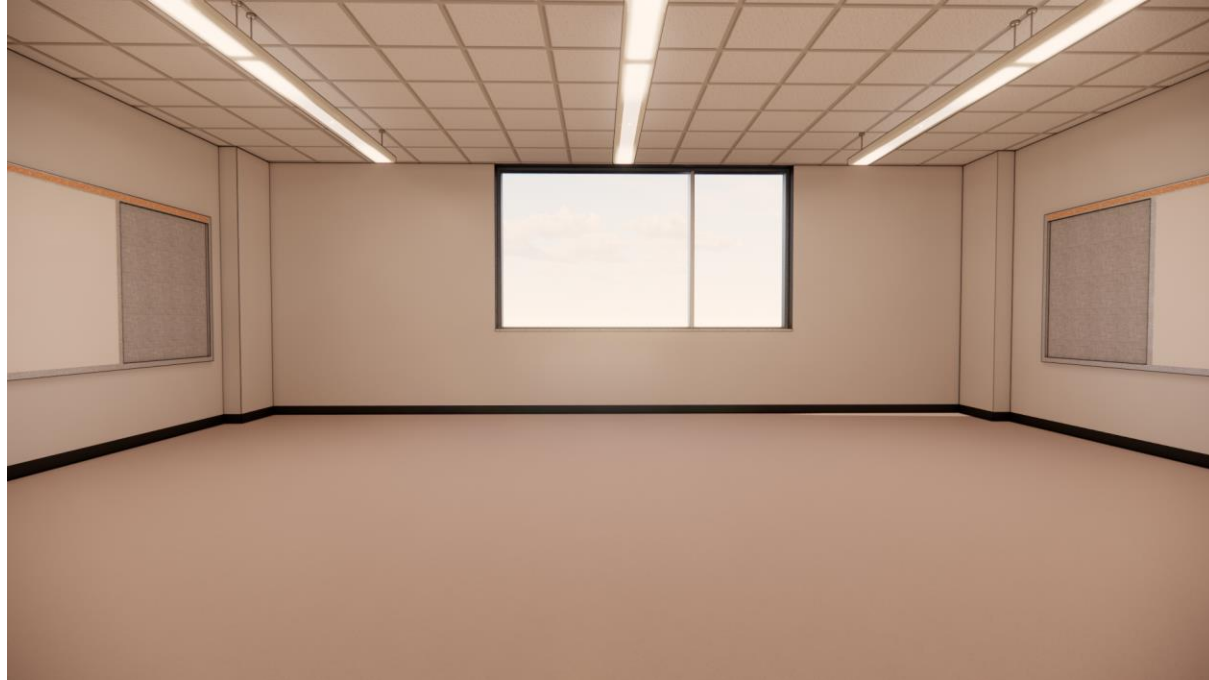


TYPICAL CLASSROOM (K-1)



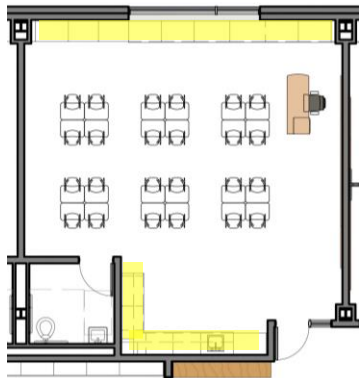
TYPICAL CLASSROOM (K-1)

CASEWORK - BASEBID



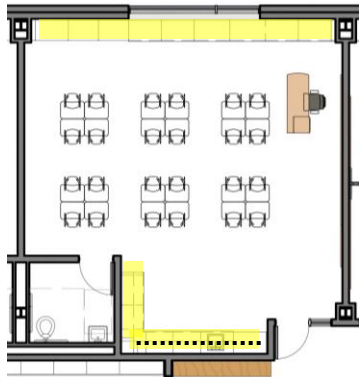
TYPICAL CLASSROOM (K-1)

CASEWORK – ALTERNATE 1

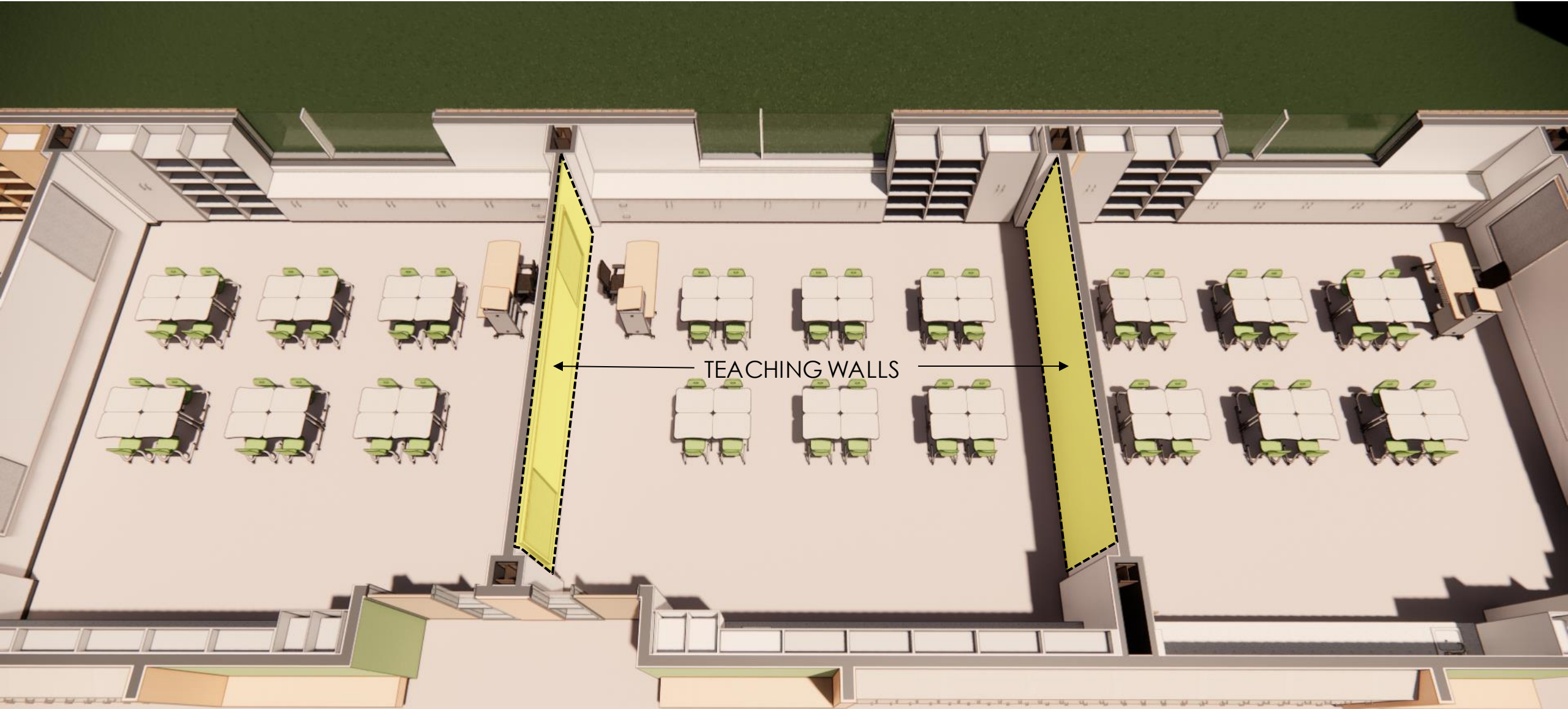


TYPICAL CLASSROOM (K-1)

CASEWORK – ALTERNATE 2

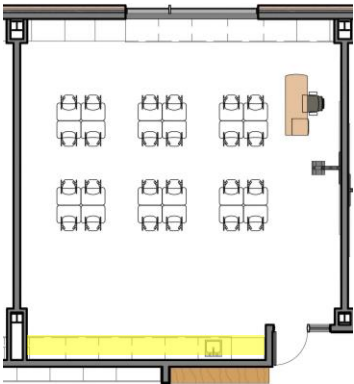
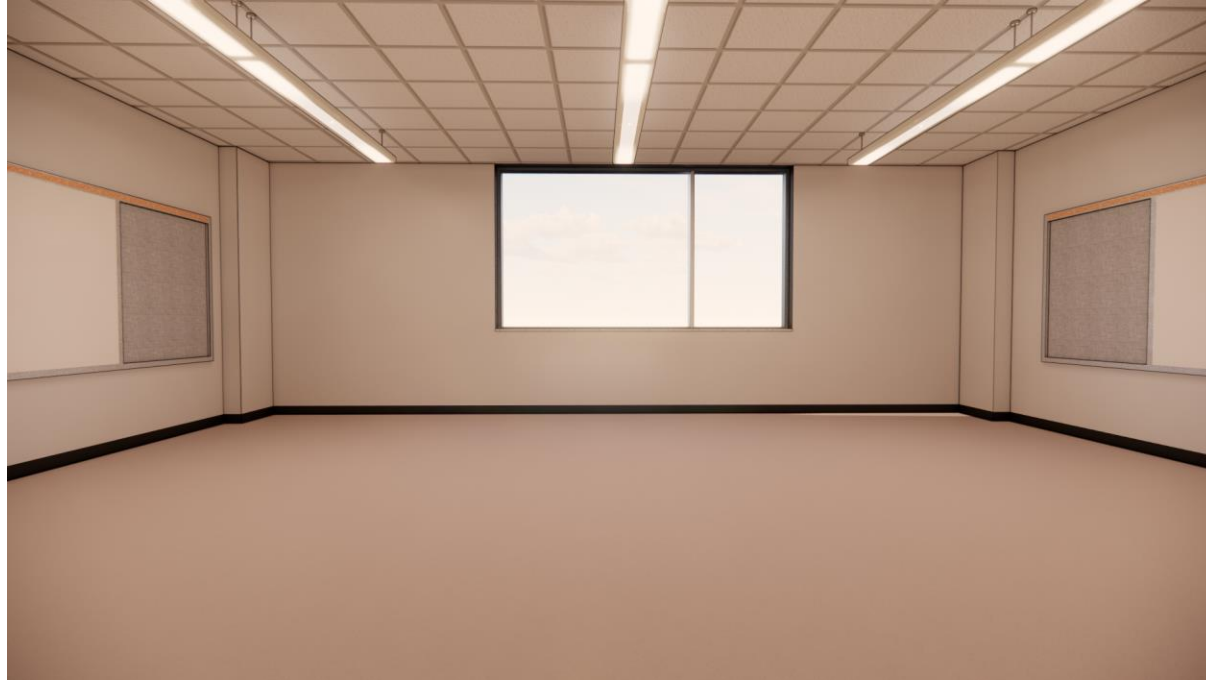


TYPICAL CLASSROOM (2-4)



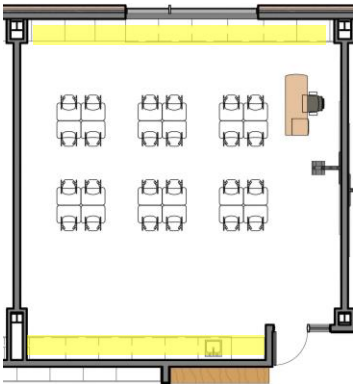
TYPICAL CLASSROOM (2-4)

CASEWORK – BASE BID



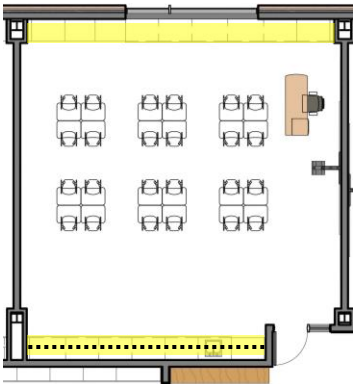
TYPICAL CLASSROOM (2-4)

CASEWORK – ALTERNATE 1



TYPICAL CLASSROOM (2-4)

CASEWORK – ALTERNATE 2



EXPANDED CLASSROOM

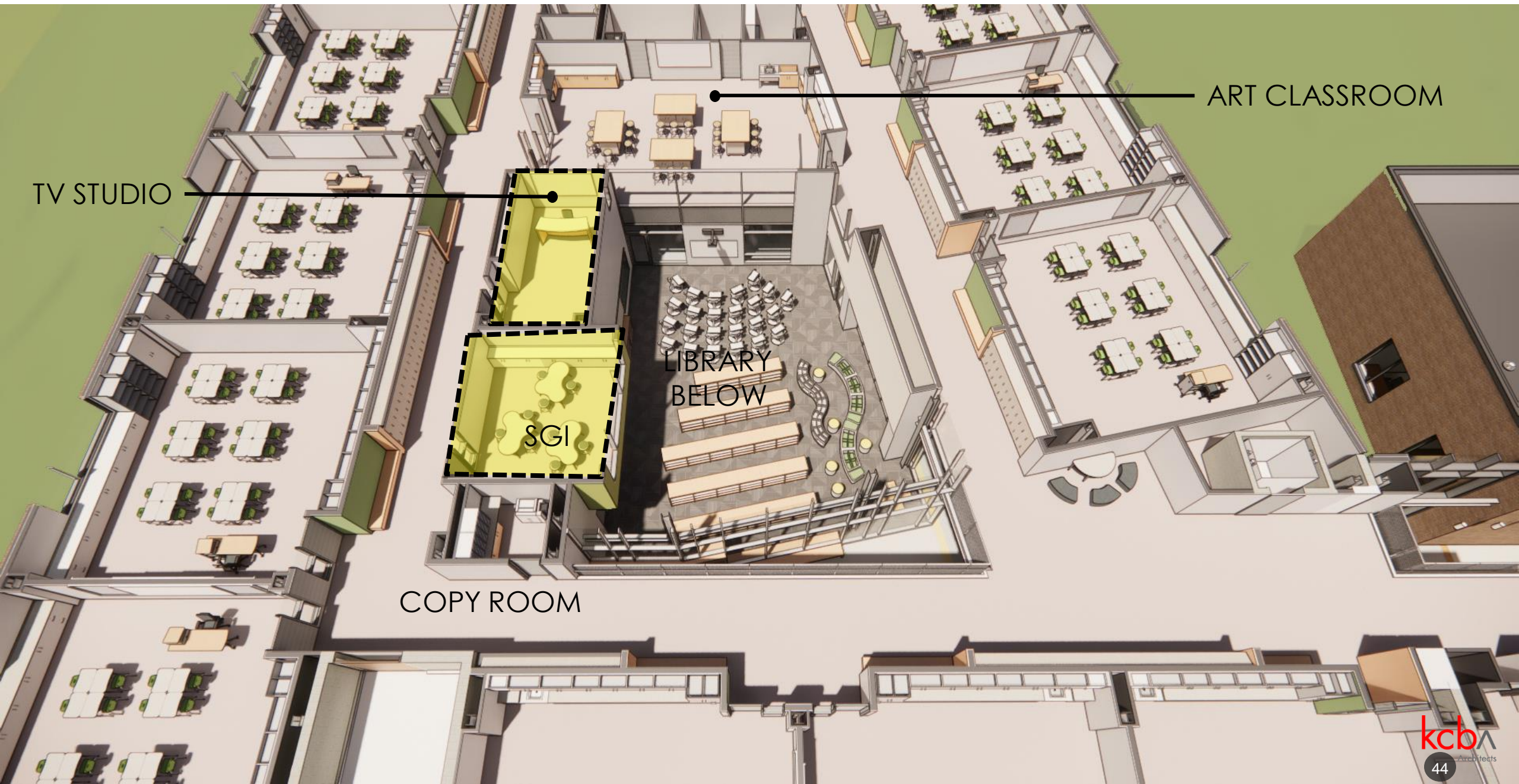


EXPANSION
FOR 900 SF
CLASSROOM



SECOND FLOOR ANIMATION

ART + COLLABORATION



TV STUDIO

ART CLASSROOM

LIBRARY
BELOW

SGI

COPY ROOM



SMALL GROUP INSTRUCTION



BUDGET SUMMARY

NEW SCHOOL OPTION – CAPACITY 625

Proposed New Construction (84,000sf @ \$270/sf)			\$22,680,000
Site work required for new construction (18%)			\$4,082,400
Demo of existing school building (52,534sf @ \$8/sf)			\$420,272
Design/Bidding Contingency - 3%			\$815,480
TOTAL CONSTRUCTION COST			\$27,998,152
Construction Contingency - 5%			\$1,399,908
Soft Costs - 13% (Fees, Permits, etc.)			\$3,639,760
Budget: FF&E Allowance (\$1200/student)			<u>\$750,000</u>
TOTAL PROJECT COST			\$33,787,820

NEW SCHOOL OPTION – CAPACITY 625

Proposed New Construction (84,000sf @ \$270/sf)			\$22,680,000
Site work required for new construction (18%)			\$4,082,400
Demo of existing school building (52,534sf @ \$8/sf)			\$420,272
Design/Bidding Contingency - 3%			\$815,480
TOTAL CONSTRUCTION COST			\$27,998,152

Changes that reflect cost:

- Removed basement mechanical space (eliminated rock excavation) -200sf
- Continued to reduce overall size of the school for most cost effective plan -184sf
- Increased the size of the gym to accommodate more seating (bleachers) +1200sf
- Expanded one 660sf classroom on each floor to full 900sf for learning support +480sf

1680sf increase of educational space

Only 1296sf building increase

NEW SCHOOL OPTION – CAPACITY 625

Proposed New Construction (85,296sf* @ \$270/sf)			\$23,029,920
Site work required for new construction (18%)			\$4,145,386
Demo of existing school building (52,534sf @ \$8/sf)			\$420,272
Design/Bidding Contingency - 3%			\$827,867
TOTAL CONSTRUCTION COST			\$28,423,445
Construction Contingency - 5%			\$1,421,172
Soft Costs - 13% (Fees, Permits, etc.)			\$3,695,048
Budget: FF&E Allowance (\$1200/student)			<u>\$750,000</u>
TOTAL PROJECT COST			\$34,289,665**

*Includes 1680sf net educational space increase with only 1296sf total building increase

**Original estimate presented to board 8/20/2019 was \$34,347,783

March 2020 (50% Design Development Estimate)

NEXT STEPS



- DESIGN DEVELOPMENT PRESENTATION TO SCHOOL BOARD MAY 19TH
 - WILL INCLUDE THIRD PARTY COST ESTIMATE
- ACT 34 HEARING
 - BOARD APPROVAL TO ADVERTISE 7/21
 - ACT 34 HEARING 9/8
 - 30 DAY COMMENT PERIOD ENDS = 10/8
- BID PERIOD 10/13 – 11/10
 - BOARD REVIEW BIDS 11/17
 - BOARD VOTE TO AWARD BIDS 11/24

Timeline.....



- **BOARD PRESENTATION MAY**
 - **APPROVAL TO COMPLETE CONSTRUCTION DOCUMENTATION**
- **BOARD REVIEW ACT 34 IN JULY**
 - **TO ADVERTISE HEARING**
- **BOARD VOTES TO AWARD CONSTRUCTION BIDS NOV. '20**
- **START CONSTRUCTION DEC. '20**
- **OPEN SCHOOL AUGUST 2022**



DISCUSSION